

TOTOKU

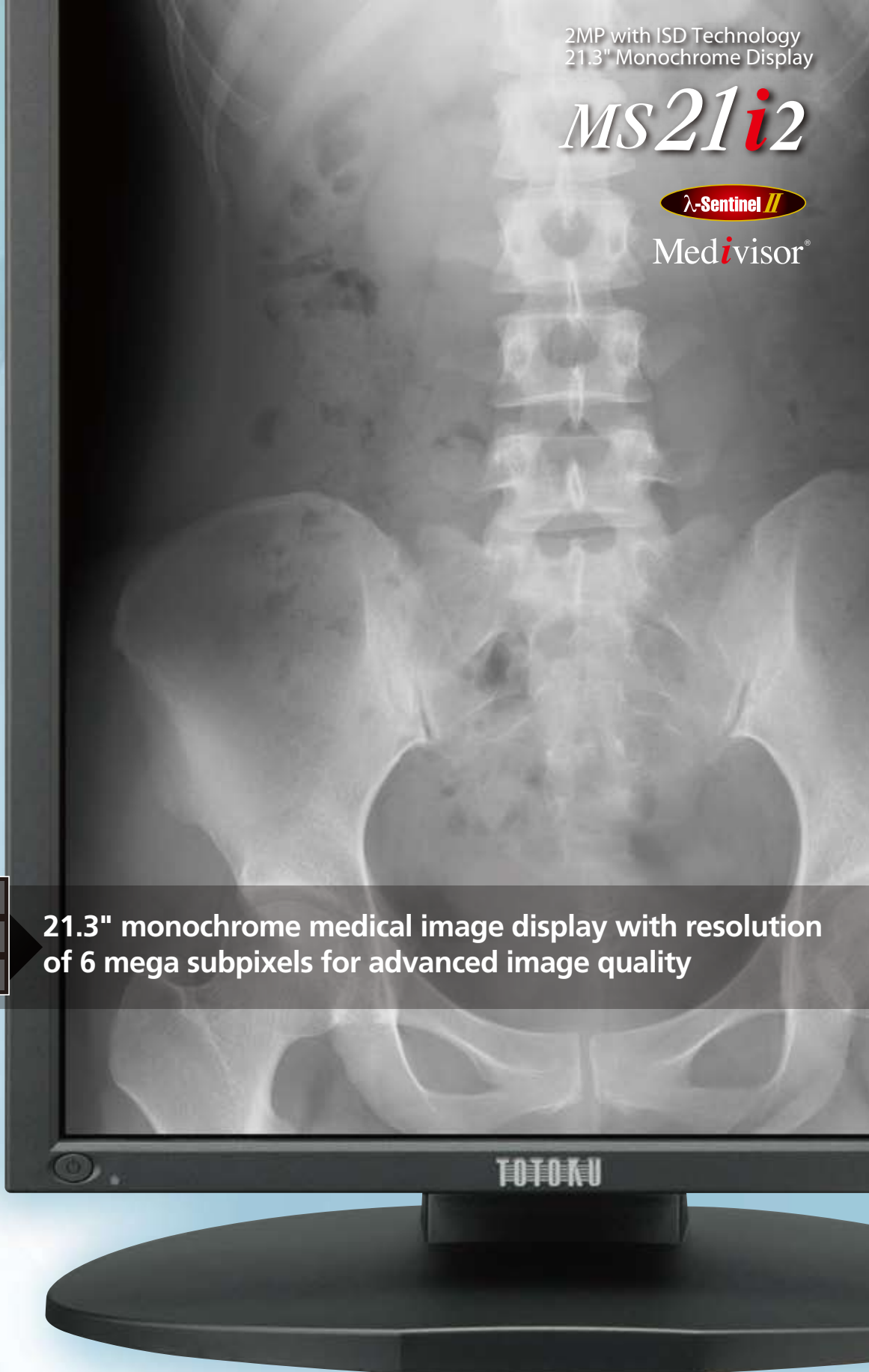


2MP with ISD Technology
21.3" Monochrome Display

MS21i2



Medi**i**visor®



ISD TECHNOLOGY

21.3" monochrome medical image display with resolution of 6 mega subpixels for advanced image quality

NEW

6M

*Independent
Sub-pixel Drive*

Simultaneous display of 1276 shades of gray for smooth rendering
Special AR coating for film-like black and enhanced sharpness

- 21.3"
- Digital Input
- 1800 cd/m²
- 700:1
- Calibration function
- 1276 Step grayscale
- OSD
- Luminance Uniformity Correction
- Hardware Pivot
- LED Indicator
- Special AR Coating

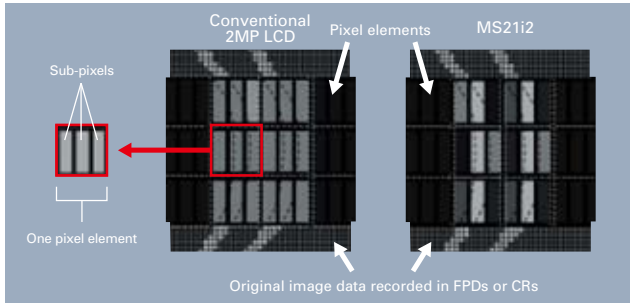
High resolution of 6M sub-pixels realized by ISD technology

While a pixel pitch of a 2MP display is 270 μ m, MS21i2 achieves 90 μ m in a sub-pixel chain direction by ISD technology to realize faithful reproduction of image details.

ISD (Independent Sub-pixel Drive)

Driven by each sub-pixel value corresponding to detailed information recorded in an original image, three times resolution enhancement is achieved. (Patent pending) In addition, up to 1276 shades of gray are now simultaneously displayable by the upgraded ISD technology.

*Customized viewer software is required to display images with enhanced resolution by the ISD technology.



High image precision with user-friendly functions

- Luminance equalizer to achieve highly accurate luminance uniformity across the screen
- Calibration function to adjust luminance and gamma to create smooth grayscale to DICOM GSDF
- Simultaneous display of 1276 shades of gray for smooth rendering
- Hardware pivot function for smooth portrait orientation
- IPS panel offering high luminance, high contrast, and wide viewing angle
- OSD information display to check the display's current status
- LED indicator for current operating status
- Enhanced functions such as Advanced Power Saving by utility software

Advanced quality control solution

- Luminance stabilizing system λ -Sentinel II constantly monitoring and accurately stabilizing luminance on the screen through the built-in front sensor
- Calibration with the front sensor
- Remote calibration and monitoring

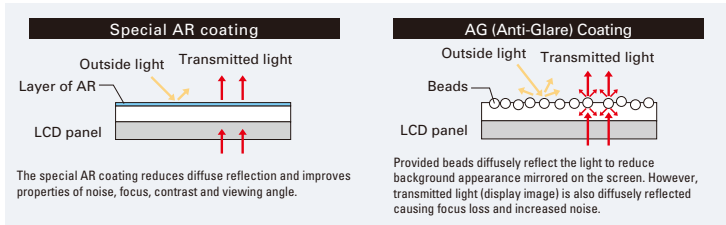


High reliance and a full range of services

- Paring service to match color temperature of two displays
- Worldwide medical safety and EMI standards

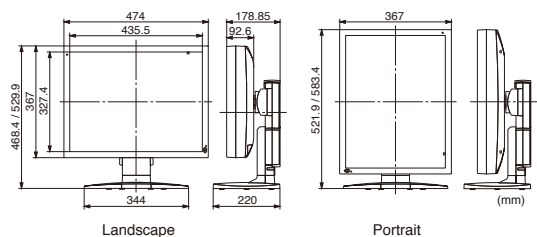
Special AR Coating for Film-like Black and Improved Sharpness

TOTOKU's new special AR coating technology (patent pending) addresses properties of focus, noise reduction, contrast, and viewing angle all achieving film-like black and accurate reproduction of images.



*This chart explains general ideas of each mechanism and may be different from the actual structures.

Model Name	MS21i2
Technology	21.3-inch, TFT Monochrome, IPS Technology
Display Area	432mm X 324mm
Pixel Pitch	0.270mm X 0.270mm
Contrast Ratio	700 : 1 typ.
Maximum Luminance	1800cd/m ² typ. calibrated to 410cd/m ²
Viewing Angle	170° vertical and horizontal
Available Resolution	USTEXT, 640X480(VGA), 800X600(SVGA), 1024X768(XGA), 1280X1024(SXGA), 4800 (1600 X 3) sub-pixel X 1200pixel
Grayscale	3061 shades of gray to 256 shades of gray Simultaneous display of 1276 shades of gray is possible with the customized viewer.
Input Sync Signal	DVI 1.0 compliant
Plug and Play	DDC2B compliant
Input	AC adapter 100V ~ 240V (\pm 10%) 50/60Hz
Maximum Power Consumption	85W typ. (with power management feature)
Calibration Control	Luminance, Gamma, Capability of saving 3 sets of LUT settings (An optional calibration kit is required.)
OSD Information Display	Model name, Serial No., Total operating time, Calibration settings (Operating time from Last Calibration, Luminance, Gamma, etc.), Current luminance, etc.
USB Hub	USB Rev. 2.0 compliant, Self-powered USB upstream connector (x1), USB downstream connector (x2)
Other Features	Luminance Uniformity Correction, Hardware Pivot, LED indicator
Approvals	UL60601-1, CSA C22.2 No. 601.1, MDD/CE, FDA510(k), FCC-B, VCCI-B
Dimensions (incl. tilt stand)	Landscape : 474.0 (W) X 468.4 / 529.9 (H) X 220.0 (D) mm Portrait : 367.0 (W) X 521.9 / 583.4 (H) X 220.0 (D) mm
Weight	Net: approx. 10.8kg, Without tilstand: approx. 6.6kg
Tilt stand	Tilt, Swivel, Portrait / Landscape
Mount	100mm VESA mounting
Security Slot	On the back of the panel and the tilt stand
LCD surface treatment	Special AR Coating
Accessories	AC adapter, Power cord (3P), DVI cable, USB cable, Operation manual



Viewer Software

MS21i2 supports 6M-ISD and 2M-normal modes. To use MS21i2 in 6M-ISD mode, customized viewer software is required.

TOTOKU has obtained ISO14001 and ISO9001/ISO13485 certification which are international standards concerning environment management and quality control respectively.



Please contact the distributor below with inquiries and orders.

TOTOKU

TOTOKU Intelligent Devices and Solutions Dept. Sales and Marketing Division.
TOTOKU ELECTRIC CO., LTD.

1-3-21 Okubo, Shinjuku-ku, Tokyo 169-8543 TEL: +81 3-5273-2022 FAX: +81 3-5273-2091
*Osaka Branch: +81 6-6352-3541 *Nagoya Branch: +81 52-771-1161 *Shinetsu Branch: +81 268-34-5285

USA
TOTOKU NORTH AMERICA, INC
1425 Greenway Dr., Ste. 565
Irving, TX 75038, U.S.A.
TEL : +1-972-550-1888
E-mail : info@totoku-na.com

EUROPE
TOTOKU Europe GmbH
Hammfelddamm 6.
D-41460 Neuss, Germany
TEL : +49-2131-36668-0
E-mail : info@totoku.eu

ASIA
TOTOKU ELECTRIC CO., LTD.
3-21, Okubo-1 Chome
Shinjuku-ku, Tokyo, Japan
TEL : +81-3-5273-2053
E-mail : info-idsc@totoku.co.jp

Additional product information is available at <http://www.totoku.com/display/>

*Microsoft and Windows are trademarks of the US Microsoft Corporation and are registered in the US and other countries. *Company names and product names are the trademarks or registered trademarks of the respective companies. *Product specifications and appearance are subject to change without notice. *Colors in photographs may differ from actual colors due to the printing process. *Images on screens are simulated.